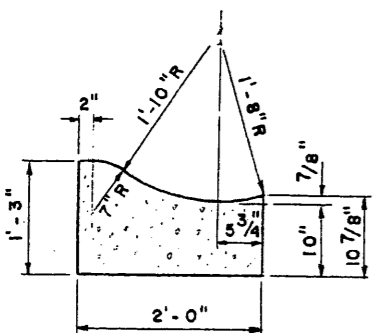
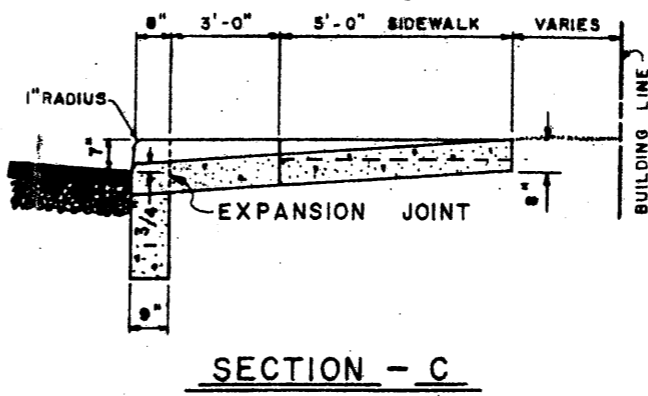
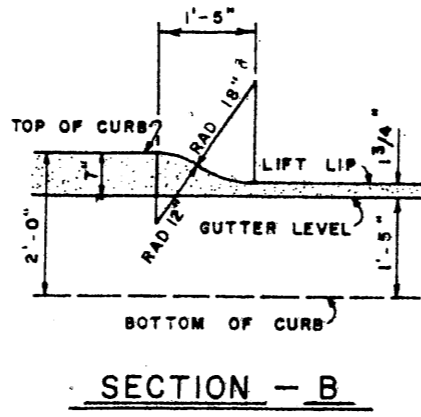
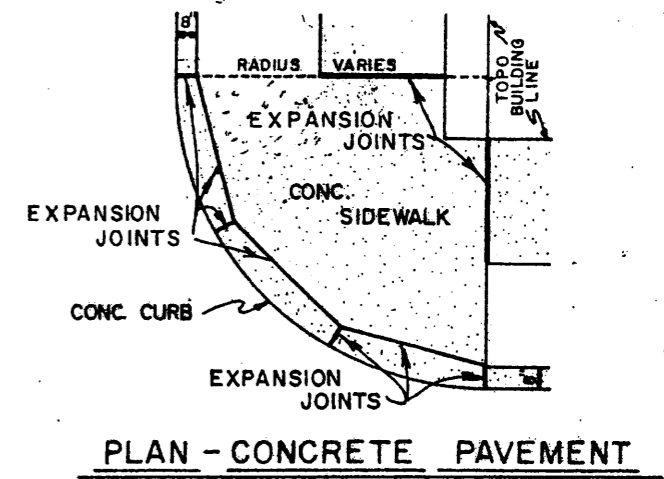
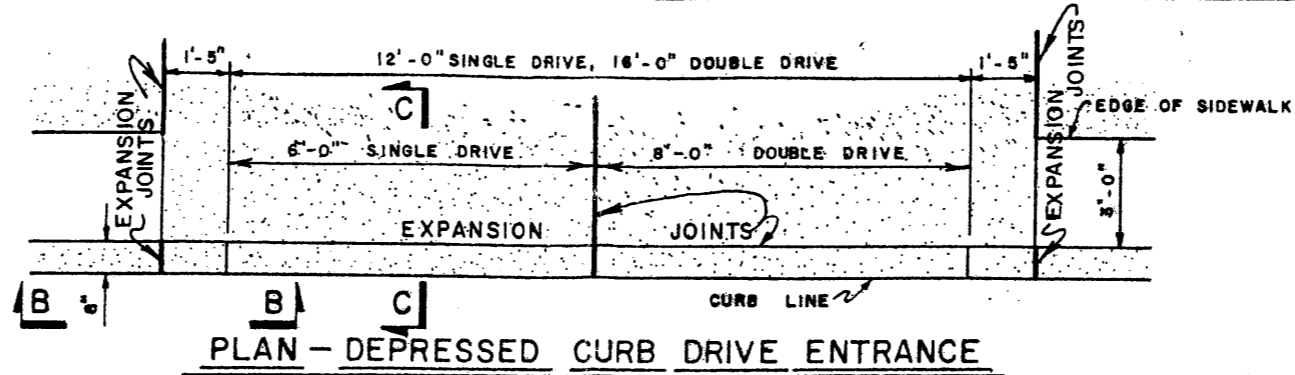
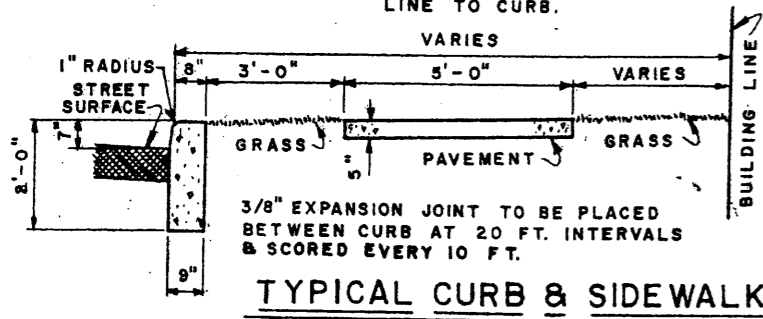
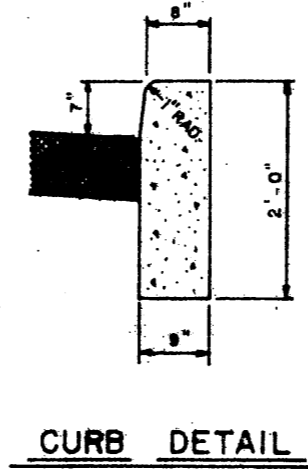
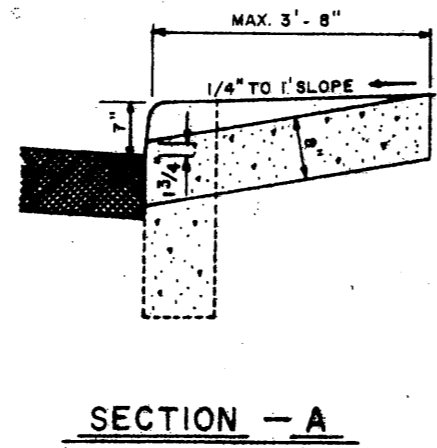


NOTE: SLOPE FOR ALL PAVEMENTS  
1/4" PER FOOT-BUILDING  
LINE TO CURB.

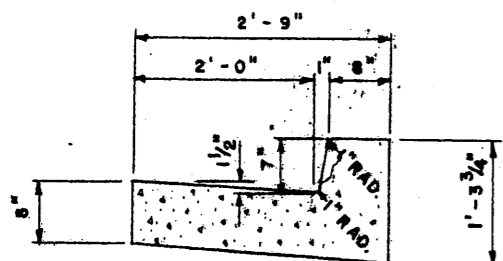


**COMBINATION CONCRETE ROLL  
TYPE CURB & GUTTER**

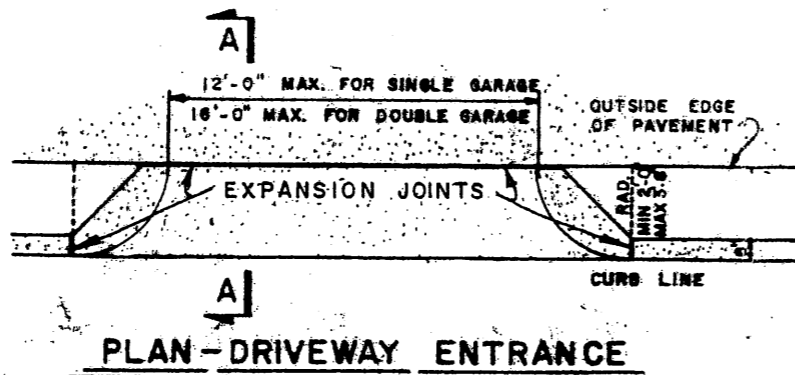


|        |        |                   |
|--------|--------|-------------------|
| 12'-0" | RADIUS | ARC = 18'-10 1/4" |
| 10'-0" | RADIUS | ARC = 15'-8 1/2"  |
| 9'-0"  | RADIUS | ARC = 14'-1 3/4"  |
| 8'-0"  | RADIUS | ARC = 12'-6 3/4"  |
| 6'-0"  | RADIUS | ARC = 9'-5"       |

**PLAN - CONCRETE CURB CORNERS**



**COMBINATION CONCRETE  
CURB & GUTTER**



NOTE:  
PAVEMENT TO BE SCORED EVERY 5 FT. FOR SIDEWALKS  
OF 5 FT. IN WIDTH & EVERY 4 FT.-4 IN FOR SIDEWALKS  
OF 4 FT. IN WIDTH ALONG WITH 3/8" EXPANSION  
JOINTS PLACED AT 20 FT. INTERVALS.  
ALL EXCAVATION WITHIN THE CARTWAY AREA SHALL BE  
BACKFILLED WITH PENN. D.G.T. NO 2 R.C. LIMESTONE  
MATERIAL TO THE GRADE OF THE EXISTING ROADWAY  
SURFACE.

|  |   |                                   |
|--|---|-----------------------------------|
| BOROUGH OF BIRDSBORO<br>BERKS COUNTY, PENNSYLVANIA | SPOTTS, STEVENS and MCCOY, INC.             |                                   |
|  | CONSULTING                                  | ENGINEERS                         |
| ORDINANCE PLAN                                     |   |                                   |
| CURB, SIDEWALK AND<br>DRIVEWAY CONSTRUCTION        | R.N.N. J.T.M. R.J.D.<br>7.332 5.4.71 9.1.71 | APPROVALS<br>NONE 7030-18-B-002 2 |